
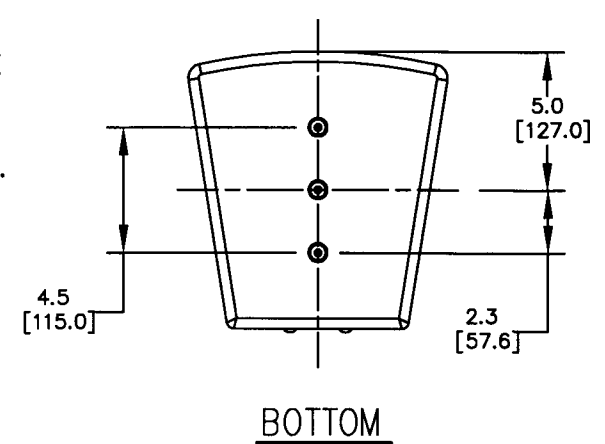
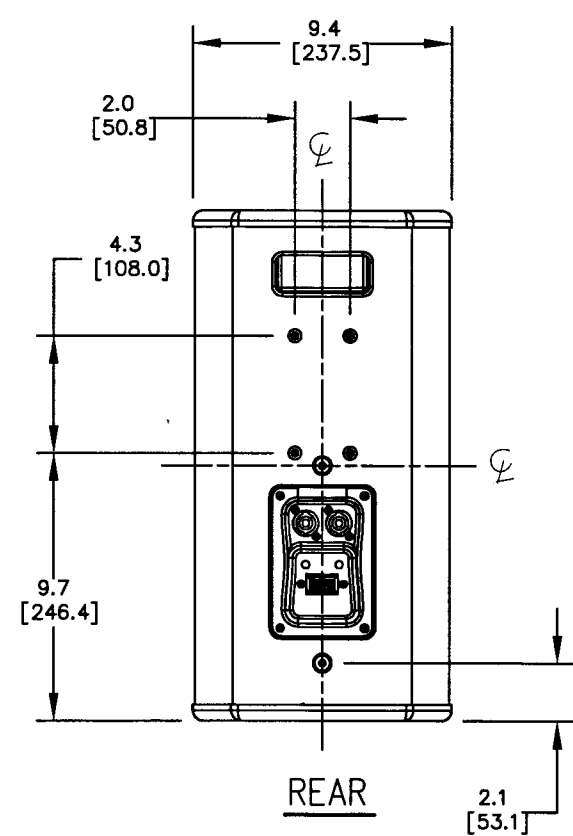
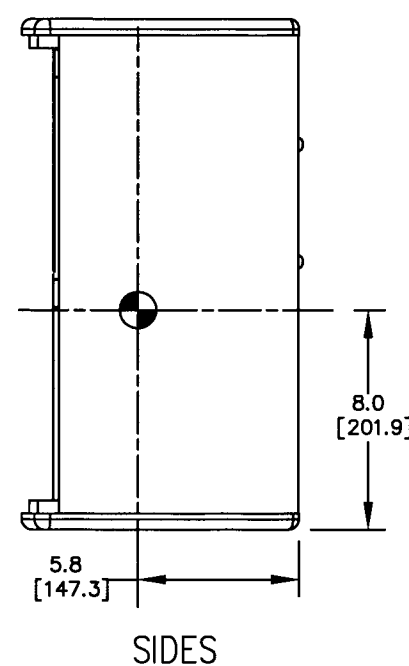
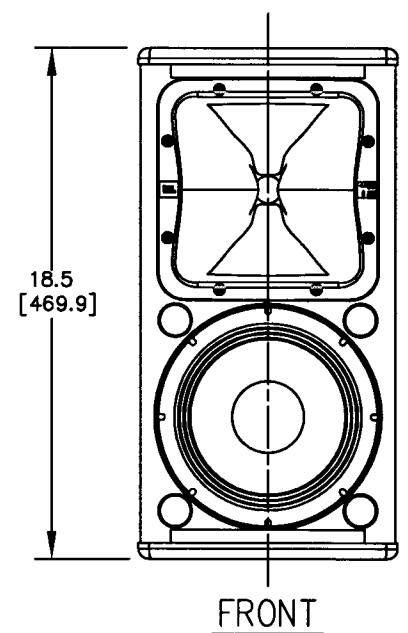
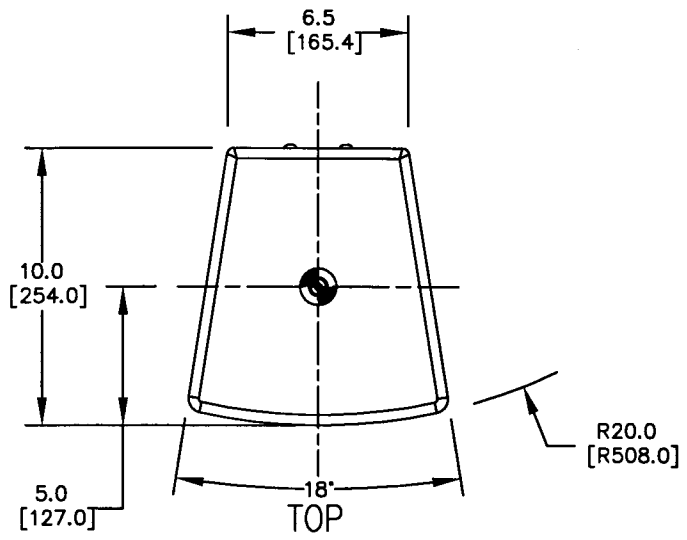



THESE DRAWINGS AND SPECIFICATIONS ARE THE PROPERTY OF JBL INCORPORATED. THEY ARE ISSUED IN STRICT CONFIDENCE AND SHALL NOT BE REPRODUCED OR USED AS THE BASIS FOR MANUFACTURE OR APPARATUS WITHOUT WRITTEN PERMISSION.

ALL MATERIAL SPECIFIED ON THIS DRAWING SHALL COMPLY WITH EUROPEAN DIRECTIVE 2002/95/EC. 


REVISIONS					
CHG	LTR	DESCRIPTION	DRFT	D,C	DATE
35674	A	RELEASE TO MARKETING	TH		

2/14/00



1. COMPONENTS: LF - 1X 228H 8" DIA. WOOFER
HF - 1X 2408H-1 COMPRESSION DRIVER
1X PT-D95HF-1 (90° X 50°) WAVEGUIDE
OR 1X PT-D126HF-1 (120° X 60°) WAVEGUIDE
2. INPUT CONNECTORS: 2 NEUTRIK NL4 CONNECTORS AND 1 BARRIER STRIP TERMINAL BLOCK, ALL 3 CONNECTED IN PARALLEL.
3. OPERATING MODE: FULLY PASSIVE CROSSOVER.
4. GRILLE: 16 GA. PERFORATED CRS, POWDER COATED BLACK WITH BLACK FOAM BACKING AND ROTATABLE LOGO.
5. MATERIALS: 12MM (.47") HARDWOOD PLYWOOD.
TOP/BTM PANEL 15MM (.59") HARDWOOD PLYWOOD.
6. FINISH: BLACK DURAFLEX (WHITE AVAILABLE)
7. WEIGHT: 12.8 Kg (28.2 LBS).
8. INDICATES CENTER OF GRAVITY (CG) 
9. SUSPENSION POINTS "•" 10 TOTAL:
1 EA M8 THREAD PATTERN - TOP PANEL
3 EA M8 THREAD PATTERN - BTM PANEL
2 EA M8 THREAD PATTERN - REAR PANEL
4 EA M6 THREAD PATTERN - REAR PANEL

NOTES: (UNLESS OTHERWISE SPECIFIED)

TOLERANCES (UNLESS OTHERWISE SPECIFIED)		 JBL PROFESSIONAL A Harman International Company Northridge, California 91329 U.S.A.	
XXX ± .063 INCH		TITLE	
XX ± .125 INCH		CUSTOMER DRAWING: AC18/95, AC18/26	
ANGULAR TOLERANCE OF 0°±30°		SIZE	REV
FRACTIONAL DIMENSIONS ± 1/32		A	A
• DIMENSIONS ARE INCHES		DRAWING NO.	365219
• ALL DIMENSIONS ARE FINISHED DIMENSIONS		SCALE	NTS
• DO NOT SCALE DRAWING		SHEET	1 OF 1